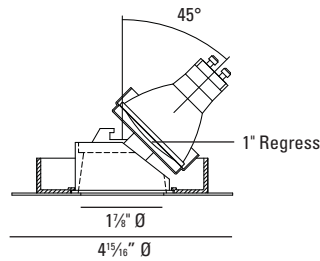


HX-Sliver Metal Halide

Adjustable 45°



7758 7775



LUMINAIRE INFORMATION

APPLICATION:

Accent luminaire for Residential, Commercial, Retail or Hospitality environments.

MATERIALS:

Trim: Die cast aluminum / steel with torsion spring mounting.
7758 - Vertical groove black baffle
7775 - White cone

LAMP: (not included)

(1) 20W or 39W MHMR16 GX10.

VOLTAGE:

Specify 120V or 277V.

BALLAST:

Solid state electronic.

ADJUSTMENT:

360° horizontal
45° vertical tilt

CEILING CUT OUT:

4 3/8" Ø

LISTINGS:

Dry/damp location.



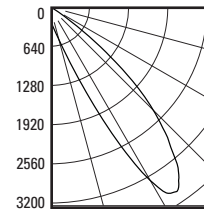
IC/Airtight housing meets Washington state airflow requirement and ASTM E283.
Chicago Plenum housing is Chicago Plenum rated.
IBEW union made.

NOTES:

- Maximum ceiling thickness 1 inch.
Consult factory for other ceiling conditions.
- Not for use with ES16 lamps.

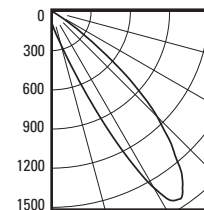
PHOTOMETRICS:

Distribution chart



LTL No.: 13912.ies
39W MHMR16 GX10
25° (tilted 40°)
43.1% Efficiency

Distribution chart



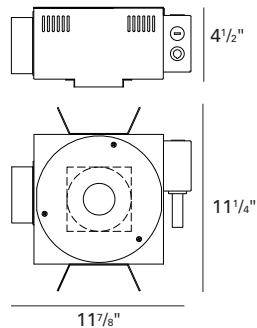
LTL No.: 17156.ies
20W MHMR16 GX10
25° (tilted 40°)
43.1% Efficiency

HOUSING INFORMATION

New Construction

HX824 - (20W)

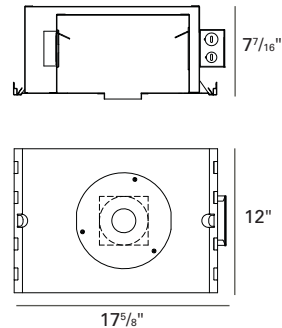
HX400SL - (39W)



IC/Airtight

HX824-IC - (20W)

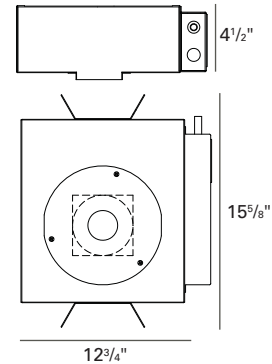
Not available in 39W



Chicago Plenum

HX824-CP - (20W)

HX400SL-CP - (39W)



ORDERING INFORMATION

Trim

7758 - Vertical Groove Black Baffle

7775 - White Cone

HX-Sliver

Adjustable 45°,

New Construction and

Chicago Plenum:

20W or 39W MHMR16

IC/Airtight: 20W MHMR16

– Finish

10 - White

12 - Brushed

Stainless Steel

21 - Black

22 - Texture White

28 - Metalized Grey

– Housing

20W MHMR16

HX824 - New Construction

HX824-IC - IC/Airtight

HX824-CP - Chicago Plenum

39W MHMR16

HX400SL - New Construction

Not available in IC/Airtight

HX400SL-CP - Chicago Plenum

– Voltage

120V

277V

– Accessories

CB27 - 27" C-Channel Bars

CB52 - 52" C-Channel Bars

LAMPS - MHMR16 20W / 39W

How to Specify

Trim – Finish – Housing – Voltage – Accessories

USAI®

USA Illumination™
www.usaillumination.com
info@usaillumination.com

1126 River Road
New Windsor, NY 12553

T 845-565-8500
F 845-561-1130

© 2009, USAI, LLC.
All rights reserved.
All designs protected by copyright.