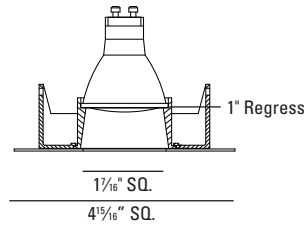


# HX-Sliver Metal Halide

# 7987 7989

## Downlight



### LUMINAIRE INFORMATION

#### APPLICATION:

Accent luminaire for Residential, Commercial, Retail or Hospitality environments.

#### MATERIALS:

Trim: Die cast aluminum / steel with torsion spring mounting.  
7987 - Vertical groove black baffle  
7989 - White cone

#### LAMP: (not included)

(1) 20W or 39W MHMR16 GX10.

#### VOLTAGE:

Specify 120V or 277V.

#### BALLAST:

Solid state electronic.

#### CEILING CUT OUT:

4<sup>3/8</sup>"Ø

#### LISTINGS:

Dry/damp location.



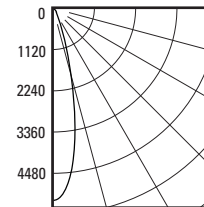
IC/Airtight housing meets Washington state airflow requirement and ASTM E283.  
Chicago Plenum housing is Chicago Plenum rated.  
IBEW union made.

#### NOTES:

- Maximum ceiling thickness 1 inch.  
Consult factory for other ceiling conditions.
- Not for use with ES16 lamps.

#### PHOTOMETRICS:

##### Distribution chart



LTL No.: 13818.ies  
39W MHMR16  
GX10 25°  
65.1% Efficiency

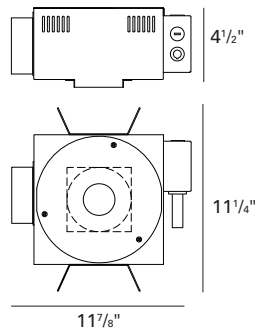
Ft below	FC nadir	Dia. @ 50%
6.0	144.8	2.5
8.0	81.5	3.4
10.0	52.1	4.2
12.0	36.2	5.1
14.0	26.6	5.9
16.0	20.4	6.8

### HOUSING INFORMATION

#### New Construction

**HX824** - (20W)

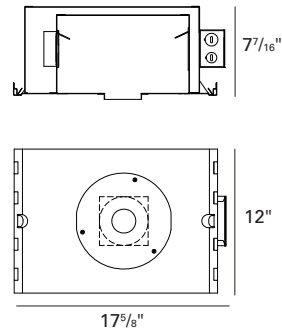
**HX400SL** - (39W)



#### IC/Airtight

**HX824-IC** - (20W)

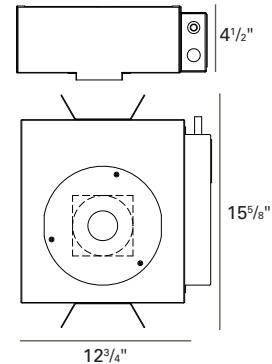
Not available in 39W



#### Chicago Plenum

**HX824-CP** - (20W)

**HX400SL-CP** - (39W)



### ORDERING INFORMATION

Trim	– Finish	– Housing	– Voltage	– Accessories
<b>7987</b> - Vertical groove black baffle	<b>10</b> - White	20W MHMR16	<b>120V</b>	<b>CB27</b> - 27" C-Channel Bars
<b>7989</b> - White cone	<b>12</b> - Brushed Stainless Steel	<b>HX824</b> - New Construction	<b>277V</b>	<b>CB52</b> - 52" C-Channel Bars
HX-Sliver	<b>21</b> - Black	<b>HX824-IC</b> - IC/Airtight		<b>LAMPS</b> - MHMR16 20W / 39W
Downlight,	<b>22</b> - Texture White	<b>HX824-CP</b> - Chicago Plenum		
20W or 39W	<b>28</b> - Metalized Grey	39W MHMR16		
MHMR16 GX10		<b>HX400SL</b> - New Construction		
		Not available in IC/Airtight		
		<b>HX400SL-CP</b> - Chicago Plenum		

#### How to Specify

Trim	– Finish	– Housing	– Voltage	– Accessories
------	----------	-----------	-----------	---------------

# USAI®

USA Illumination™  
www.usaillumination.com  
info@usaillumination.com

1126 River Road  
New Windsor, NY 12553

T 845-565-8500  
F 845-561-1130

©2009, USAI, LLC.  
All rights reserved.  
All designs protected by copyright.