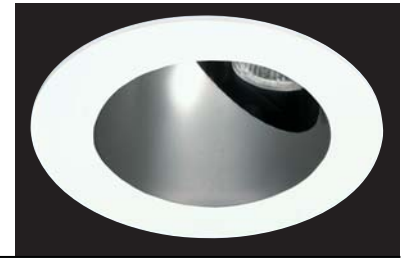
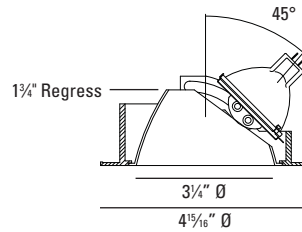


HX Low Voltage Halogen

Adjustable 45°



8854 8857 8858 8860



LUMINAIRE INFORMATION

APPLICATION:

Accent luminaire for Residential, Commercial, Retail or Hospitality environments.

MATERIALS:

Trim: Die cast aluminum with torsion spring mounting.

8854 - Vertical groove black baffle

8857 - Matte Alzak Cone

8858 - Black Alzak Cone

8860 - Vertical Groove White Baffle

Housing: Fabricated of 20 ga. galvanized steel with thru wire J-box, 2 in 2 out (4 in 4 out for IC/ Airtight) at min. 90°C, #12 AGW thru branch circuit wiring.

Housing and trim supplied as one complete unit.

Lens: Clear

LAMP: (not included) When using IR lamps, 37W Max.

New Construction / Chicago Plenum: (1) 75W max. MR16 GU5.3

IC/Airtight: (1) 50W max. MR16 GU5.3

ADJUSTMENT

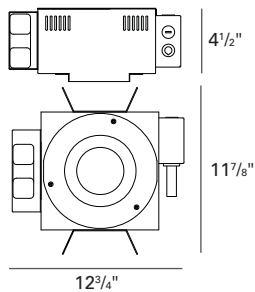
359° lockable horizontal rotation.

45° lockable vertical tilt.

HOUSING INFORMATION

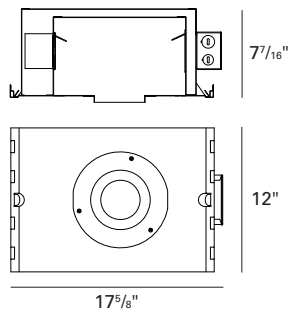
New Construction - (75W)

HX101



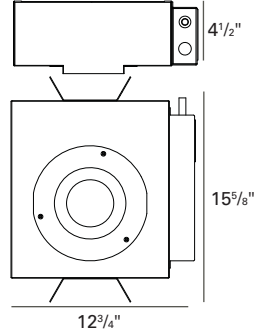
IC/Airtight - (50W)

HX101-IC



Chicago Plenum - (75W)

HX101-CP



ORDERING INFORMATION

Trim

– Finish

– Housing

– Voltage

– Accessories

8854 - Vertical Groove Black Baffle

8857 - Matte Alzak Cone

8858 - Black Alzak Cone

8860 - Vertical Groove White Baffle

HX

Adjustable 45°,

New Construction and

Chicago Plenum: 71W MR16 GU5.3

IC/Airtight: 50W MR16 GU5.3

10 - White

21 - Black

28 - Metalized Grey

HX101 - New Construction

HX101-IC - IC/Airtight

HX101-CP - Chicago Plenum

120V

277V

347V*

*347V for New Construction housing only.

9143A - Frosted Lens

9153A - Anti UV Filter

9155A - Linear Spread Lens

9156A - Prismatic Spread Lens

9157A - Stippled/Solite Soft Focus Lens

9199A - Frosted Borosilicate Lens

CB27 - 27" C-Channel Bars

CB52 - 52" C-Channel Bars

ER - Emergency Relay

How to Specify

Trim – Finish – Housing – Voltage – Accessories

USAI®

USA Illumination™
www.usaillumination.com
info@usaillumination.com

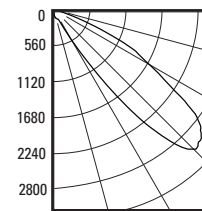
1126 River Road
New Windsor, NY 12553

T 845-565-8500
F 845-561-1130

© 2009, USAI, LLC.
All rights reserved.
All designs protected by copyright.
09/02/2010

PHOTOMETRICS:

Distribution chart



LTL No.: 13928.ies
75W MR16 GU5.3 36°
(tilted 45°)
Clear lens, black Alzak cone
58.5% Efficiency

NOTES:

- Housing included with trim.
- Maximum ceiling thickness 1 inch. Consult factory for other ceiling conditions.
- Maximum 1 lens options (size A).

VOLTAGE:

Specify 120V, 277V or 347V.

347V is for New Construction housing only.

TRANSFORMER:

Magnetic toroidal-HPF.

Note: Due to transformer / dimmer match some dimmers may cause transformer hum. Check with dimmer manufacturer for suitability.

CEILING CUT OUT:

4 3/8" Ø

LISTINGS:

Dry/damp location.



IC/Airtight housing meets Washington state airflow requirement and ASTM E283. Chicago Plenum housing is Chicago Plenum rated.

IBEW union made.