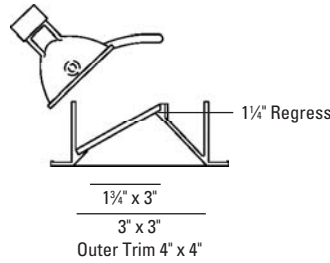


# BEVEL® Low Voltage Halogen

# 9373

## Adjustable 45°



### LUMINAIRE INFORMATION

#### APPLICATION:

Accent luminaire for Residential, Commercial, Retail or Hospitality environments.

#### MATERIALS:

Trim: Die cast aluminum with torsion spring mounting.  
 Housing: All-Ways Square™ housing allows alignment of square aperture (up to 45° rotation) after housing installation and prior to finish ceiling installation. Patent pending. Fabricated of 20 ga. galvanized steel with thru wire J-box, 2 in 2 out (4 in 4 out for IC/Airtight) at min. 90°C, #12 AGW thru branch circuit wiring. Housing and trim supplied as one complete unit.  
 Trim Lens: Frosted

#### LAMP: (not included) When using IR lamps, 37W Max.

New Construction / Chicago Plenum: (1) 71W max. MR16 GU5.3  
 IC/Airtight: (1) 50W max. MR16 GU5.3

#### ADJUSTMENT:

Hot aiming self locking rack and pinion 45° vertical adjustment and 15° tilt. Slide lock tab for locking horizontal rotation at 90° increments.

#### MOUNTING:

Butterfly brackets and adjustable nailer bars with integral nails provided. Nailer bars are extendible from 14" to 24" centers.

#### VOLTAGE:

Specify 120V, 277V or 347V.  
 347V is for New Construction housing only.

#### TRANSFORMER:

Low voltage magnetic toroidal HPF. Low voltage solid state electronic optionally available (consult factory).  
 Note: Due to transformer / dimmer match some dimmers may cause transformer hum. Check with dimmer manufacturer for suitability.

#### CEILING CUT OUT:

3 1/2" x 3 1/2"

#### LISTINGS:

Dry/damp/wet under covered ceiling.

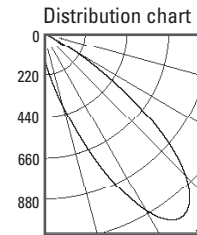


IC/Airtight housing meets Washington state airflow requirement and ASTM E283. Chicago Plenum housing is Chicago Plenum rated. IBEW union made.

#### NOTES:

- Housing included with trim.
- Maximum ceiling thickness 1 inch. Consult factory for other ceiling conditions.
- Maximum 1 lens option.

#### PHOTOMETRICS:

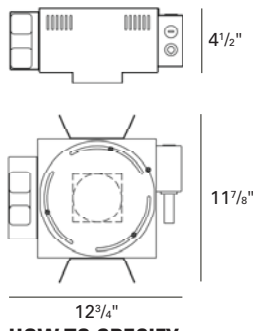


LTL No.: 14356.ies  
 71W MR16 GU5.3 40° (tilted 45°)  
 Frosted lens - 55.8% Efficiency  
 Solite lens - 65.1% Efficiency

### HOUSING INFORMATION

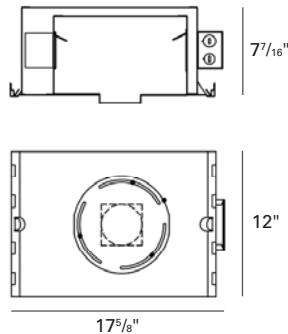
New Construction - (71W)

#### BL101X-A



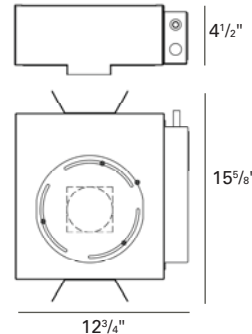
IC/Airtight - (50W)

#### BL101X-A-IC



Chicago Plenum - (71W)

#### BL101X-A-CP



### HOW TO SPECIFY

Trim	Finish	Trim Lens*	Housing	Voltage	Accessories
9373		*Frosted is standard unless option is specified			
<b>9373</b> Bevel Trim Adjustable 45°, New Construction and Chicago Plenum: 71W MR16 GU5.3 IC/Airtight: 50W MR16 GU5.3	<b>10</b> - White <b>21</b> - Black <b>28</b> - Metalized Grey	<b>B</b> - Borosilicate Clear Lens <b>C</b> - Clear Lens <b>F</b> - Frosted Lens <b>L</b> - Linear Spread Lens <b>P</b> - Prismatic Lens <b>S</b> - Solite <b>U</b> - Anti UV Filter	<b>BL101X-A</b> - New Construction <b>BL101X-A-IC</b> - IC/Airtight <b>BL101X-A-CP</b> - Chicago Plenum	<b>120V</b> <b>277V</b> <b>347V*</b>	<b>CB27</b> - 27" C-Channel Bars <b>CB52</b> - 52" C-Channel Bars <b>ER</b> - Emergency Relay <b>ACCESSORY HOLDER</b> - Consult Factory
				*347V for New Construction housing only.	