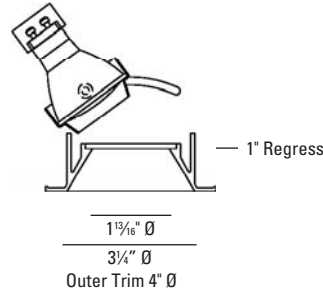


BEVEL® Metal Halide

Adjustable 35°



9835



LUMINAIRE INFORMATION

APPLICATION:

Accent luminaire for Residential, Commercial, Retail or Hospitality environments.

Trim: Die cast aluminum with ball plunger mounting.

Housing: Fabricated of 20 ga. galvanized steel with thru wire J-box, 2 in 2 out (4 in 4 out for IC/ Airtight) at min. 90°C, #12 AGW thru branch circuit wiring.

Housing and trim supplied as one complete unit.

Trim Lens: Solite

LAMP: (not included)

(1) 20W or 39W MHMR16 GX10.

MOUNTING:

Butterfly brackets and adjustable nailer bars with integral nails provided. Nailer bars are extendible from 14" to 24" centers.

ADJUSTMENT:

362° lockable horizontal rotation and 35° lockable vertical tilt.

VOLTAGE:

Specify 120V or 277V.

BALLAST:

Solid state electronic.

Note: Due to ballast / dimmer match some dimmers may cause ballast hum. Check with dimmer manufacturer for suitability.

CEILING CUT OUT:

3 1/2" Ø

LISTINGS:

Dry/damp location.



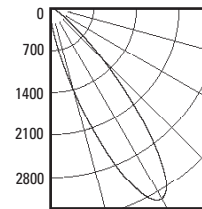
IC/Airtight housing meets Washington state airflow requirement and ASTM E283. Chicago Plenum housing is Chicago Plenum rated. IBEW union made.

NOTES:

- Housing included with trim.
- Maximum ceiling thickness 1 inch. Consult factory for other ceiling conditions.
- Maximum 1 lens options.
- Not for use with ES16 lamps.

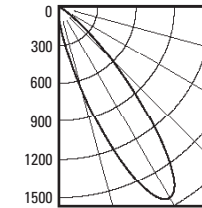
PHOTOMETRICS:

Distribution chart



LTL No.: 15134.ies
39W MMHMR16
 GX10 25° (tilted 35°)
 Solite lens
 45.3% Efficiency

Distribution chart

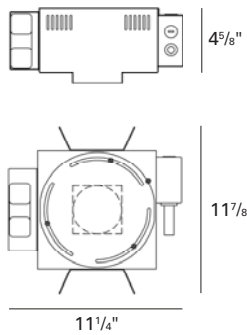


LTL No.: 17152.ies
20W MMHMR16
 GX10 25° (tilted 35°)
 Solite lens
 45.3% Efficiency

HOUSING INFORMATION

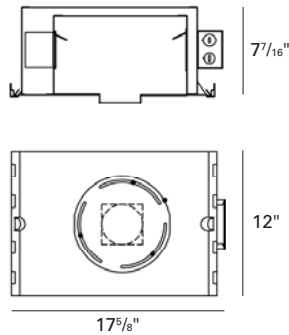
New Construction

RDB712-NC (20W)
RDB150-NC (39W)



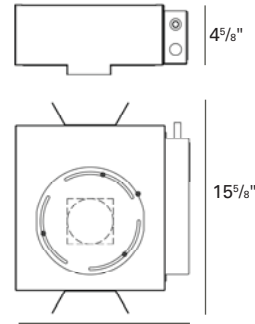
IC/Airtight

RDB712-IC (20W)
 Not available in 39W



Chicago Plenum

RDB712-CP (20W)
RDB150-CP (39W)



HOW TO SPECIFY

Trim	Finish	Trim Lens*	Housing	Voltage	Accessories
9835		*Solite is standard unless option is specified			
9835 Bevel Trim Adjustable 35°, 20W or 39W MHMR16 GX10	10 - White 21 - Black 28 - Metalized Grey	B - Borosilicate Clear Lens C - Clear Lens F - Frosted Lens L - Linear Spread Lens P - Prismatic Lens S - Solite U - Anti UV Filter	20W MHMR16 RDB712-NC - New Construction RDB712-IC - Insulated Ceiling RDB712-CP - Chicago Plenum 39W MHMR16 RDB150-NC - New Construction Not available in Insulated Ceiling RDB150-CP - Chicago Plenum	120V 277V	CB27 - 27" C-Channel Bars CB52 - 52" C-Channel Bars LAMPS - MHMR16 20W/39W