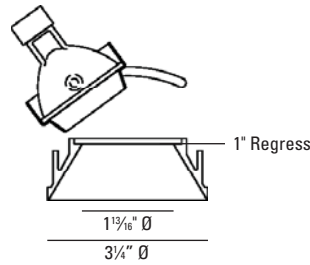


BEVEL® Trimless Low Voltage Halogen

Adjustable 35°

9935



LUMINAIRE INFORMATION

APPLICATION:

Accent luminaire for Residential, Commercial, Retail or Hospitality environments.

MATERIALS:

Trim: Die cast aluminum with ball plunger mounting.
 Housing: Fabricated of 20 ga. galvanized steel with thru wire J-box, 2 in 2 out (4 in 4 out for IC/ Airtight) at min. 90°C, #12 AGW thru branch circuit wiring. Housing and trim supplied as one complete unit.
 Trim Lens: Solite

LAMP: (not included) When using IR lamps, 37W Max.

New Construction / Chicago Plenum: (1) 71W max. MR16 GU5.3
 IC/Airtight: (1) 50W max. MR16 GU5.3

MOUNTING:

Butterfly brackets and adjustable nailer bars with integral nails provided. Nailer bars are extendible from 14" to 24" centers.

ADJUSTMENT:

362° lockable horizontal rotation and 35° lockable vertical tilt.

VOLTAGE:

Specify 120V or 277V.

TRANSFORMER:

Low voltage magnetic toroidal HPF. Low voltage solid state electronic optionally available (consult factory).

Note: Due to transformer / dimmer match some dimmers may cause transformer hum. Check with dimmer manufacturer for suitability.

CEILING CUT OUT:

4 1/4" Ø

LISTINGS:

Dry/damp location



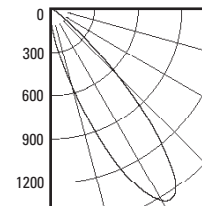
IC/Airtight housing meets Washington state airflow requirement and ASTM E283. Chicago Plenum housing is Chicago Plenum rated.
 IBEW union made.

NOTES:

- Housing included with trim.
- Maximum ceiling thickness 1 inch. Consult factory for other ceiling conditions.
- Maximum 1 lens options.
- For drywall installation only.
- Not for use with acoustical ceilings.

PHOTOMETRICS:

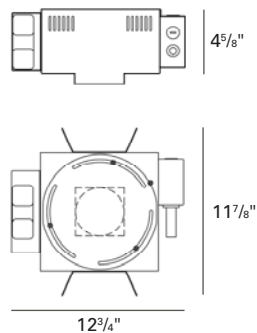
Distribution chart



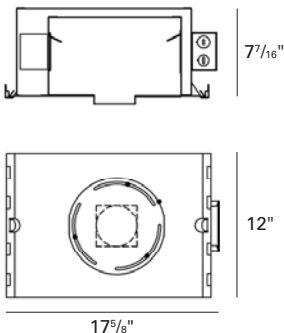
LTL No.: 15075.ies
 71W MR16 GU5.3 40° (tilted 35°)
 Solite lens
 43.7% Efficiency

HOUSING INFORMATION

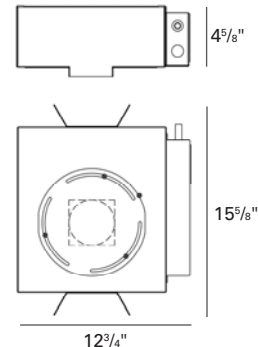
New Construction - (71W)
RDL101-NC



IC/Airtight - (50W)
RDL101-IC



Chicago Plenum - (71W)
RDL101-CP



HOW TO SPECIFY

Trim	Finish	Trim Lens*	Housing	Voltage	Accessories
9935		*Solite is standard unless option is specified			
9935 Bevel Trimless Adjustable 35°, New Construction and Chicago Plenum: 71W MR16 GU5.3 IC/Airtight: 50W MR16 GU5.3	10 - White 21 - Black 28 - Metalized Grey	B - Borosilicate Clear Lens C - Clear Lens F - Frosted Lens L - Linear Spread Lens P - Prismatic Lens S - Solite U - Anti UV Filter	RDL101-NC - New Construction RDL101-IC - Insulated Ceiling RDL101-CP - Chicago Plenum	120V 277V	CB27 - 27" C-Channel Bars CB52 - 52" C-Channel Bars ER - Emergency Relay